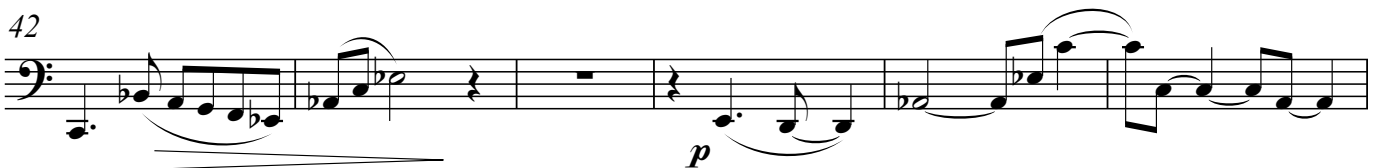
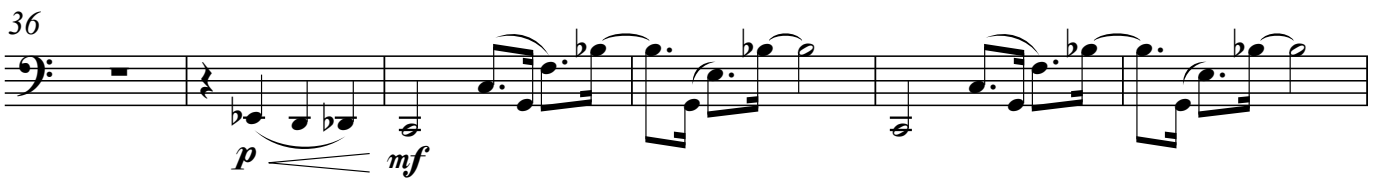
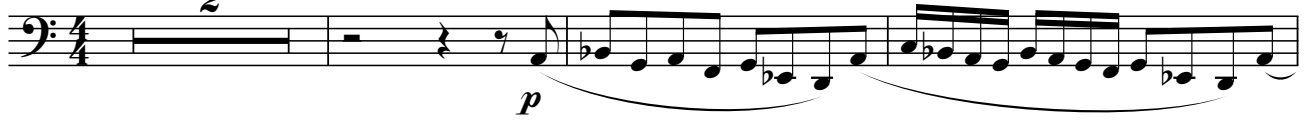


## Oregano I (♩ = 60)

2



55 Oregano II (♩ = 76)

*ff*

Detailed description: This staff contains measures 55 through 58. It begins with a bass clef and a 4/4 time signature. The music features a series of eighth-note patterns with slurs and ties. A dynamic marking of *ff* is placed below the first measure. The piece concludes with a 3/4 time signature.

59

*mp*

Detailed description: This staff contains measures 59 through 61. It starts with a bass clef and a 3/4 time signature, which changes to 4/4 in measure 60. The music consists of eighth-note patterns. A dynamic marking of *mp* is located at the end of the staff. A fermata is placed over the final note of measure 61.

72

*p* *mp* *mf*

Detailed description: This staff contains measures 72 through 75. It begins with a bass clef and a 4/4 time signature. The music is characterized by sustained chords with a dynamic marking of *p*. The dynamics shift to *mp* and then *mf* in subsequent measures. A crescendo hairpin is shown at the end of the staff.

82

*f* *pizz.*

Detailed description: This staff contains measures 82 through 85. It starts with a bass clef and a 4/4 time signature. The music features eighth-note patterns with a dynamic marking of *f*. The piece ends with a *pizz.* (pizzicato) marking and a fermata.

91

Detailed description: This staff contains measures 91 through 94. It begins with a bass clef and a 4/4 time signature. The music consists of eighth-note patterns with a dynamic marking of *f* at the beginning.

99

*mf* *mp* *p* *arco*

Detailed description: This staff contains measures 99 through 102. It starts with a bass clef and a 4/4 time signature. The music features eighth-note patterns with a dynamic marking of *mf*. The dynamics shift to *mp* and then *p*. An *arco* marking is placed above the final measure. A crescendo hairpin is shown at the end of the staff.

108

*ff*

Detailed description: This staff contains measures 108 through 112. It begins with a bass clef and a 4/4 time signature. The music features eighth-note patterns with a dynamic marking of *ff*. A crescendo hairpin is shown at the end of the staff.

113

Detailed description: This staff contains measures 113 through 115. It starts with a bass clef and a 4/4 time signature. The music consists of eighth-note patterns with a dynamic marking of *f* at the beginning.

116 Oregano I (♩ = 60)

*p* *pp*

Detailed description: This staff contains measures 116 through 119. It begins with a bass clef and a 4/4 time signature. The music features a series of quarter notes with a dynamic marking of *p*. The dynamics shift to *pp* in the final measure. A fermata is placed over the final note.