

2 Chamber Concerto for Piano, String Orchestra, and Timpani

Double Bass

I. First Movement [6.5']

Bill Robinson

Allegro (♩ = 108)
pizz.

pp

7

arco
ff

14

ff
pp

20

27

p

34

39

2
3

48

50
accel.
f
ff

54

pizz.

59



64 A Little Slower (♩ = 140)



72 (♩ = 108)

Tempo I (Allegro)

71

arco

pizz.

ff

pp

p



77

arco

ff



82

85

3



90

ff



100

106

(♩ = 176)

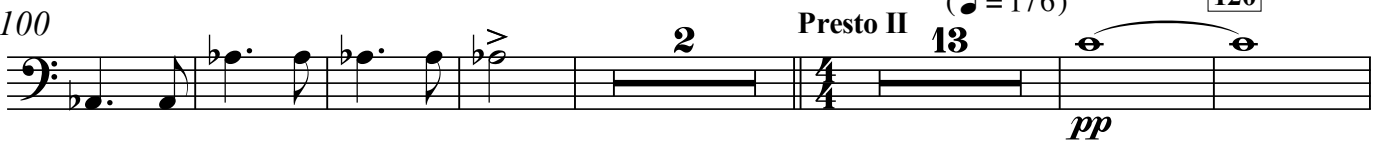
Presto II

13

120

2

pp



121



128

135

rit. --- a tempo

cresc. ---

ff



Chamber Concerto

4

136 **13** **149** Violin I **6** *rit.* ----- **158** Tempo I (Allegro) (♩ = 108) *pizz.*

161 *arco*

167 **168** *non stacc.* *ff*

173

181 **185**

188 **197** *pp*

211 *ff*

221

229 *pp*

236 (no rit.)